

TYPE E-4504-B-16

OPERATING CONDITIONS

The attention of the user of these tubes is directed to the CODE OF PRACTICE FOR USE OF CATHODE RAY TUBES IN EQUIPMENT. BS.1147, 1943.

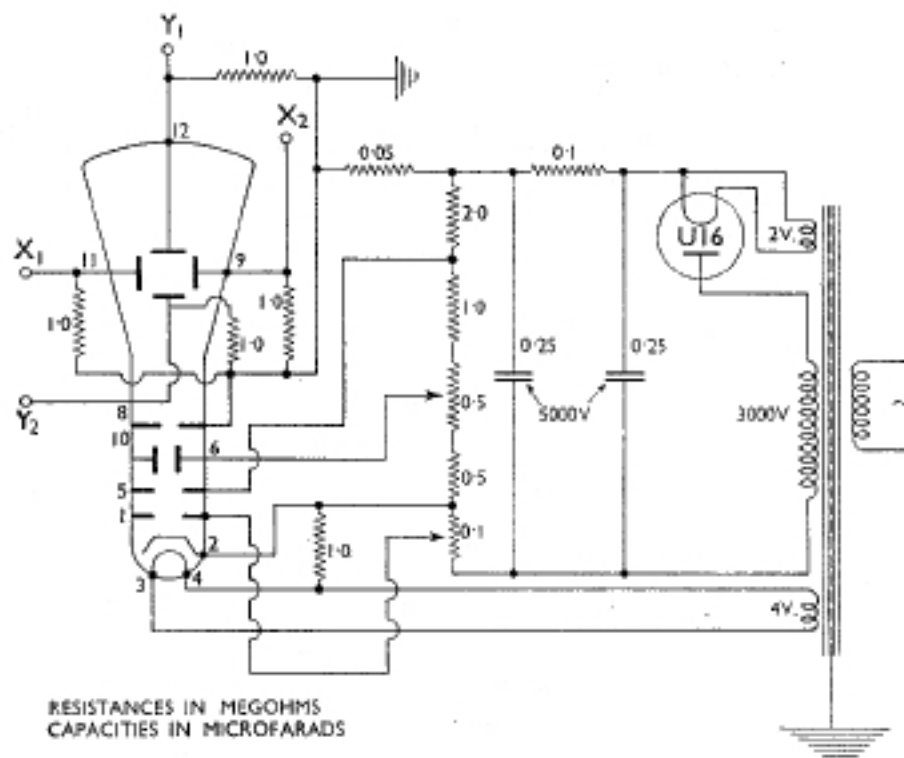
Failure to observe the recommendations contained therein may result in poor performance of, or damage to, both tube and equipment.

A.C. supplies for operating these tubes should be obtained from transformers provided with an earthed screen between primary and secondary windings in order to protect the main supplies from any high voltage surges produced under fault conditions in the equipment.

A circuit from which the various electrode potentials can be obtained is shown below.

The internal conducting coating of the tube is connected to contact 7. This should be normally tied directly to contact 10 (A3) but if it should be desired to read the current in the spot (beam current) a meter reading 0-100 microamperes may be connected between contact 7 and contact 10.

If it is not desired to apply any modulation between cathode and modulator, one side of the heater should be connected directly to the cathode, otherwise through a resistance of approximately 1 megohm.



TYPICAL CIRCUIT SHOWING HIGH POWER VOLTAGE SUPPLY TO TUBE.

This circuit applies approx. 4000 v. between A.3 and cathode. If the tube is to be operated on some other voltage, proportional modifications should be made to the output voltage of the h.t. windings and to the insulation between the windings of the transformer and to the rating of the capacitors employed.